

 Marquise



ABOVE GROUND TYPE



Assembly Of Installations

PLEASE READ CAREFULLY AND KEEP IT AFTER INSTALLING THE PRODUCT.



NORMS

For each order, We assume :

- That the owner or user is responsible for the use and safety of their swimming pool
- That the owner or user of it must be vigilant, cautious, aware of the risks.
- Never leave a child unattended.
- Follow the instructions in this technical assembly documentation.
- Make absolutely sure that the cover is closed and locked after using the pool.
- That the installer must comply with this technical assembly documentation.
- That the pelvis must not, under any circumstances, have a lateral opening greater than 70 mm.
- That the straps (anti-lifting buckles) on the widths of the blanket are properly buckled to prevent a child from going under it.
- That the cover conforms to the NFP 90-308 standard.
- That the key must be held while opening and closing the cover and, above all, remove this key after closing.

RECEPTION OF THE AUTOMATIC POOL COVER

POOL OFFICE cannot be held responsible for loss or damage to equipment transported by the carrier. It is specified that the goods travel at the risk and peril of the recipient.

In the event of missing or defective parts, it is important:

- > To mention the reservations and observations on the transport slip.
- > Send a registered letter with acknowledgment of receipt to the transport manager within 2 days of delivery, detailing precisely the problems observed.
- > Send a copy of this letter to POOL OFFICE for information.

The quality control of the original packaging must be carried out in the presence of the delivery person. The contents of the box must be checked upon delivery.

CHECK-LIST

THE BOX DELIVERED MUST INCLUDE :

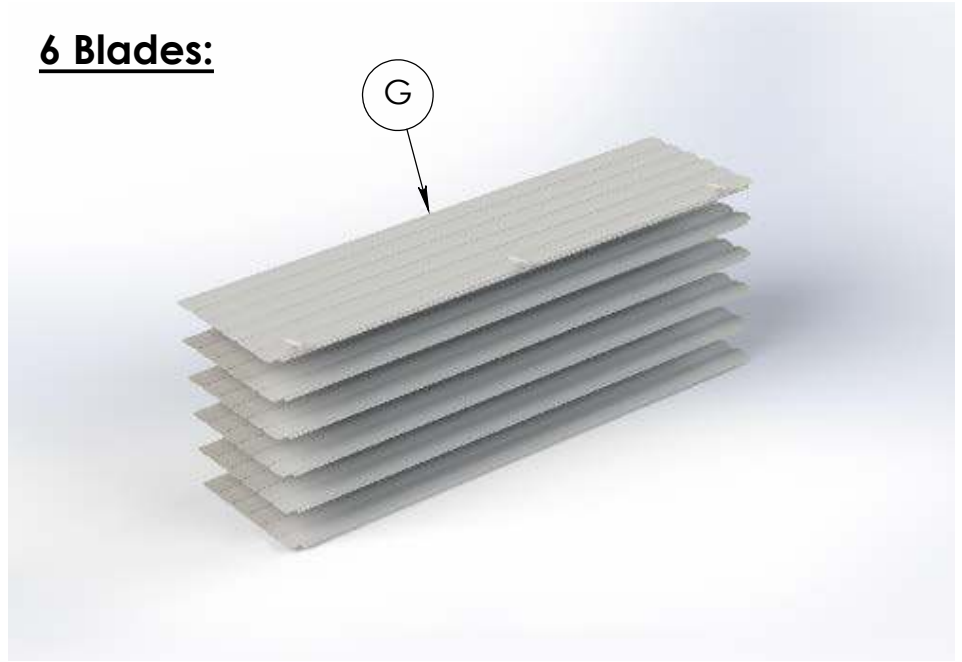
- 1 x Aluminium axis + integrated engine (A)
- 1 x Shaft + bush assembly, opposite the motor (B)
- 1 x Electric Box (C)
- Anti-lift buckles (D)
- Supports of Axis (E)
- Winding straps attached to the axis (F)
- Bag of screws
- 1 Assembly of installation catalogue

CONTENT OF THE BOX

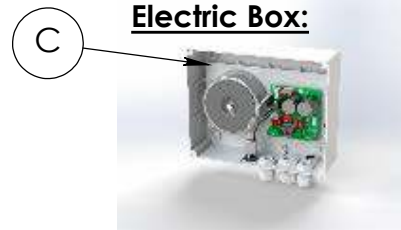
Installed Cover:



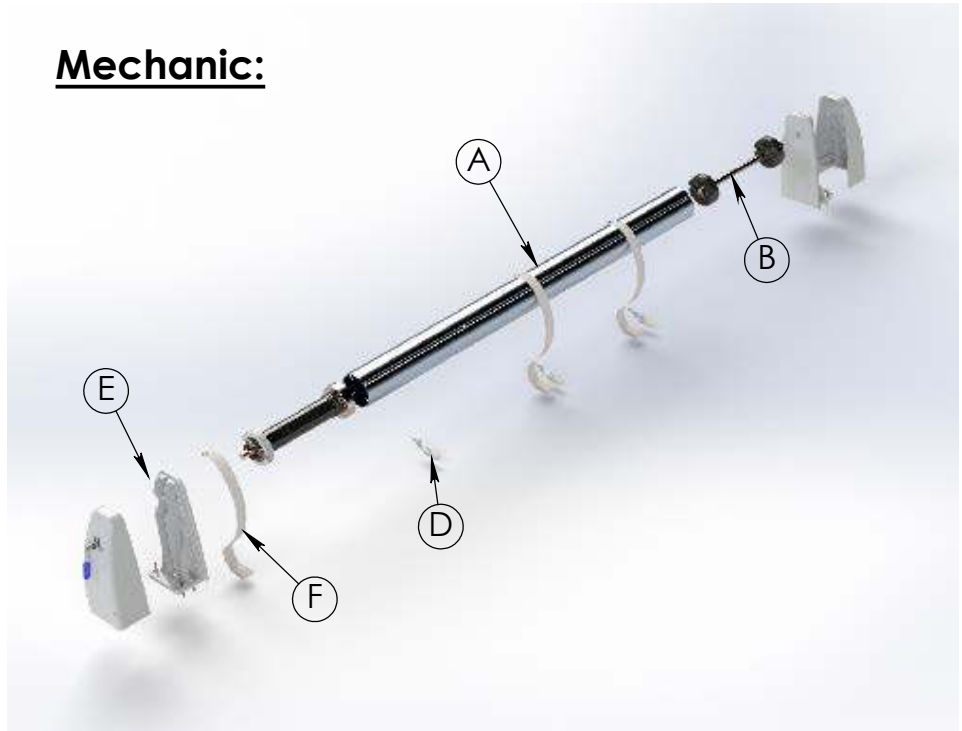
6 Blades:

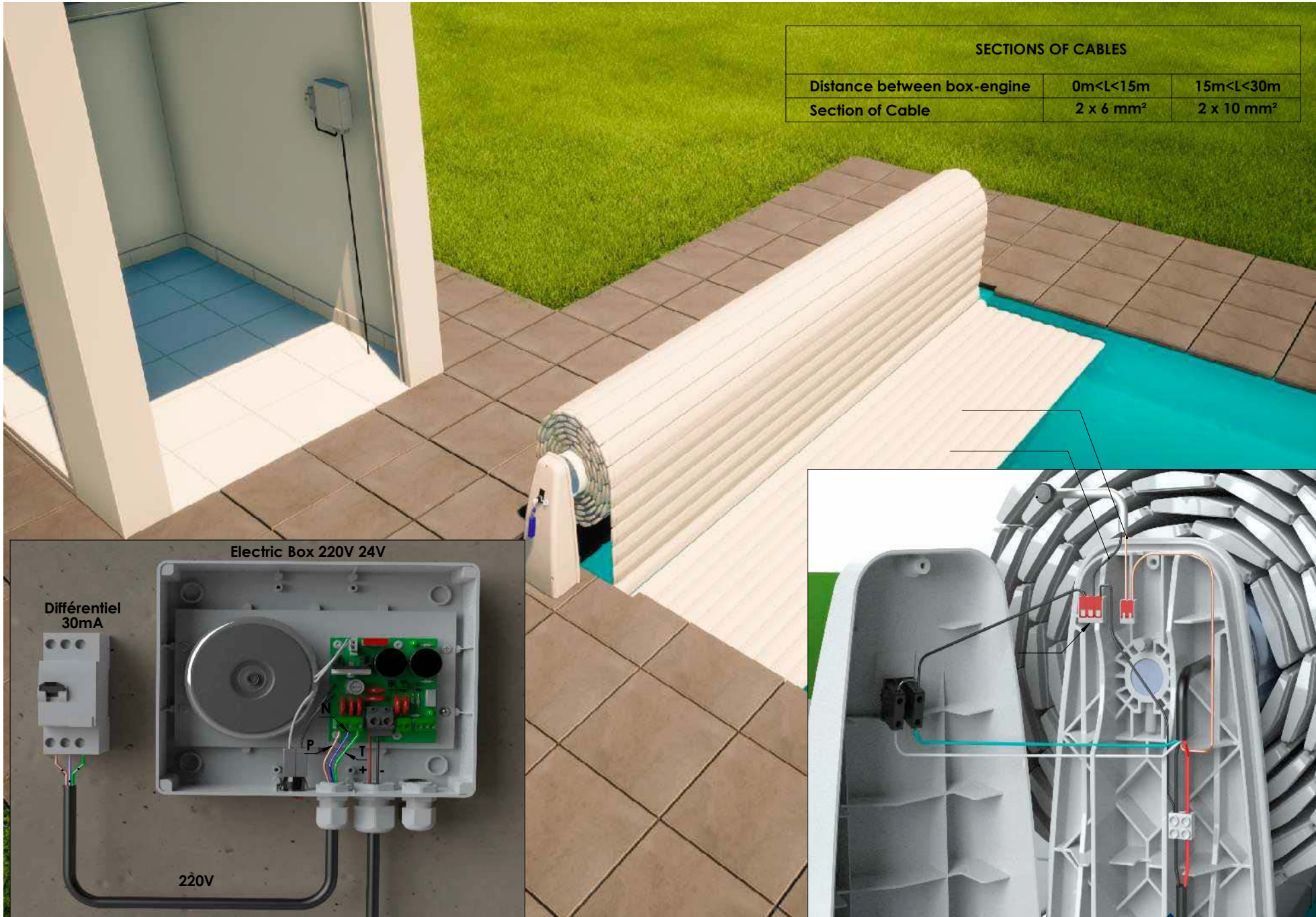


Electric Box:



Mechanic:





SECTIONS OF CABLES		
Distance between box-engine	0m<L<15m	15m<L<30m
Section of Cable	2 x 6 mm ²	2 x 10 mm ²

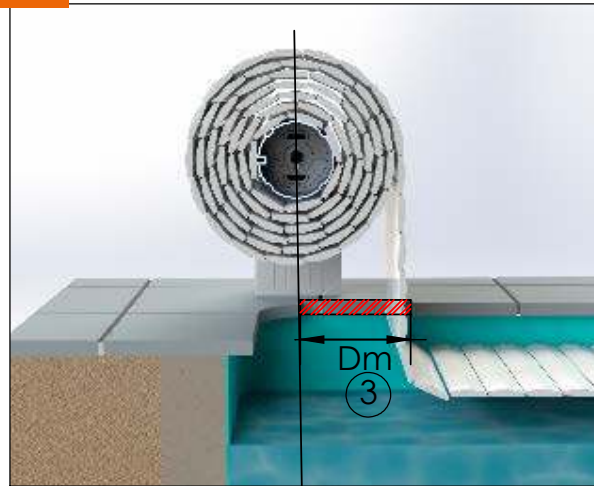
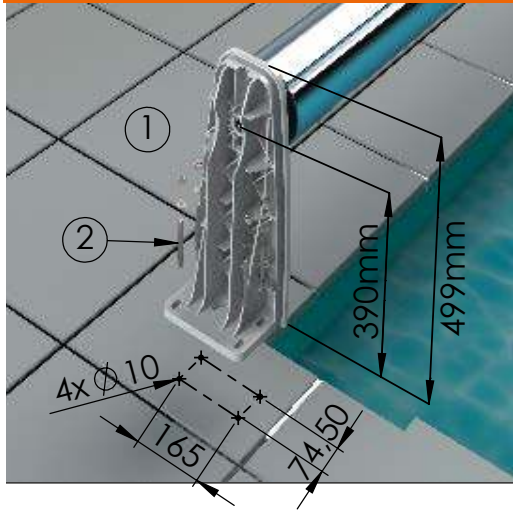
Electric Box 220V 24V

Différentiel
30mA

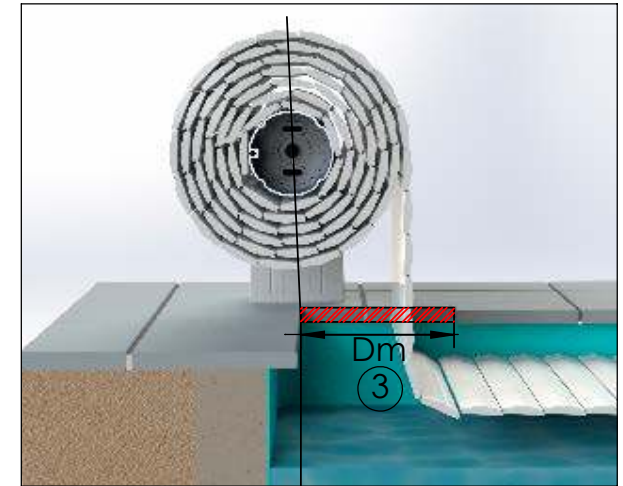
220V

24V cont.

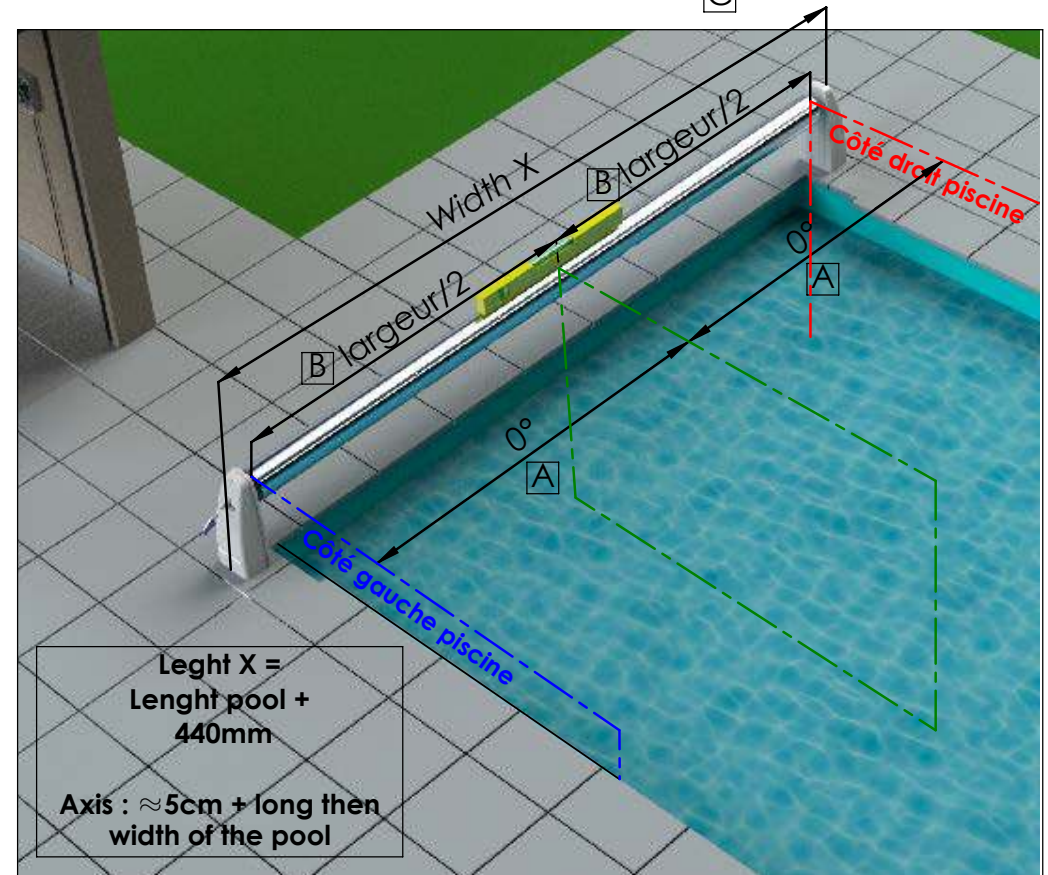
INSTALLATION OF AXIS



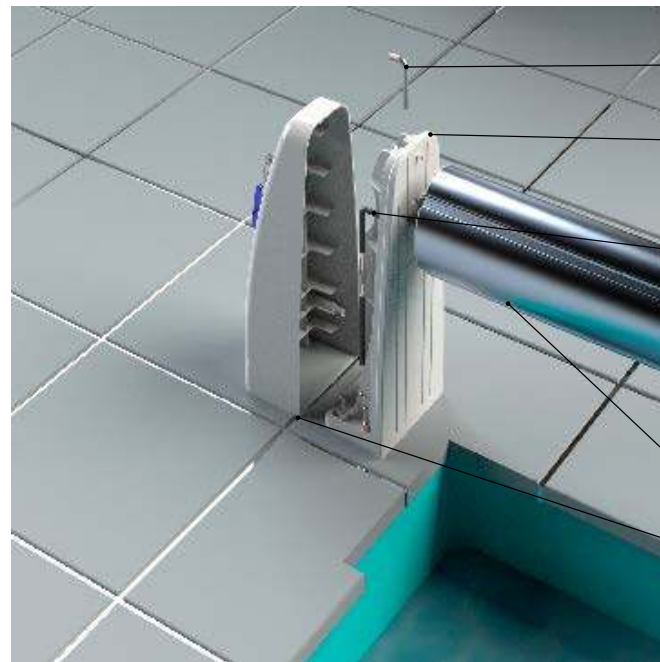
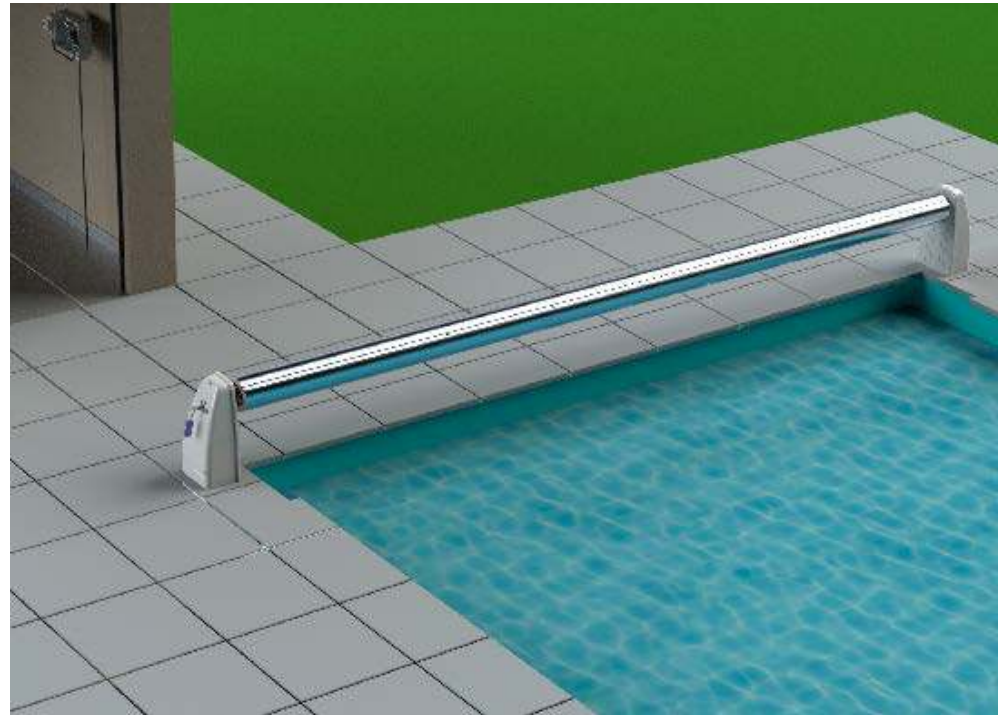
C



C



INSTALLATION OF ALUMINIUM AXIS ON SUPPORTS



Motor shaft pin

support

Power cable and
limit switch

Aluminium axis + bearing

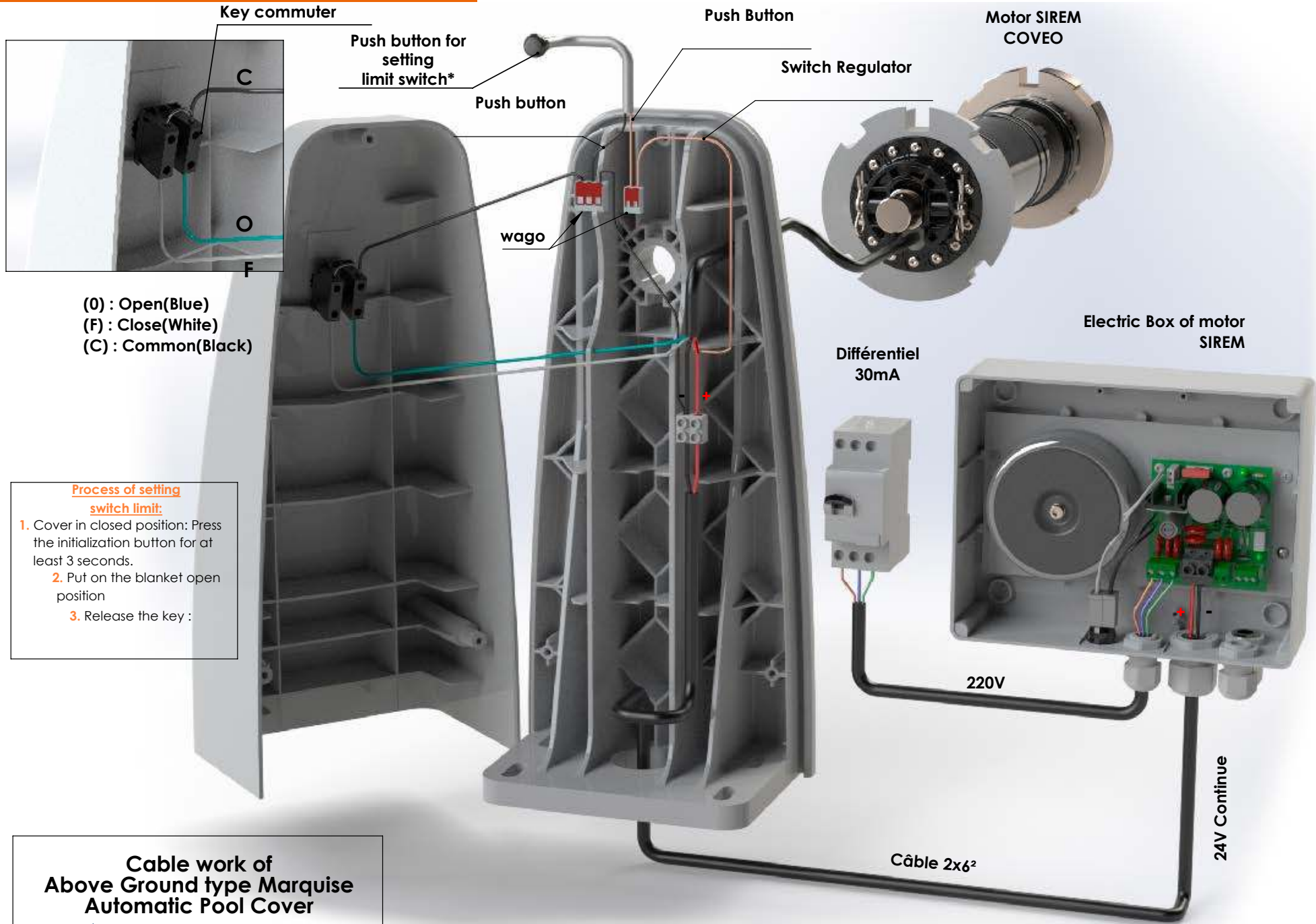
Bearing shaft pin

Aluminium axis + Motor

Cover of the support



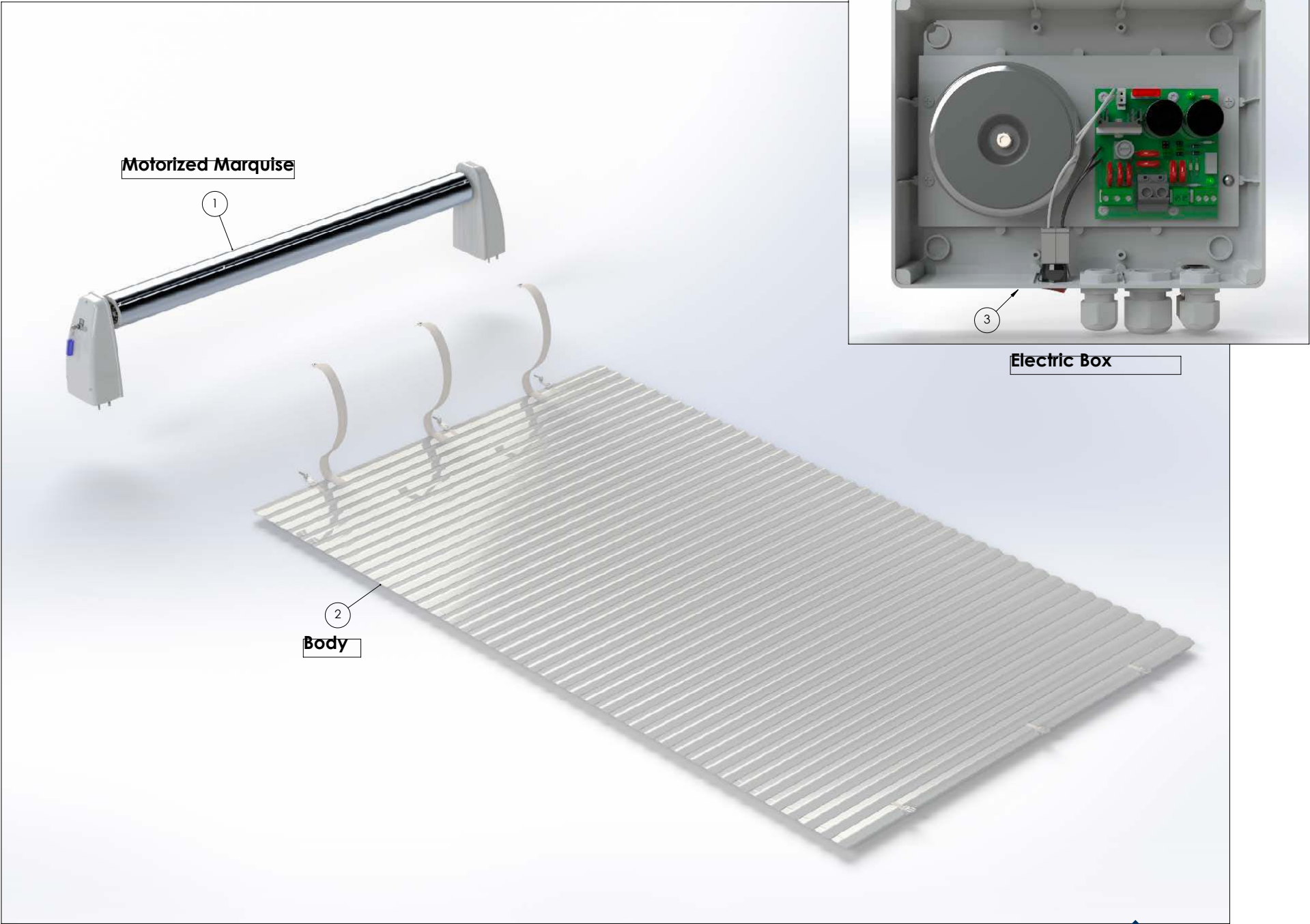
CABLE WORK OF POOL COVER

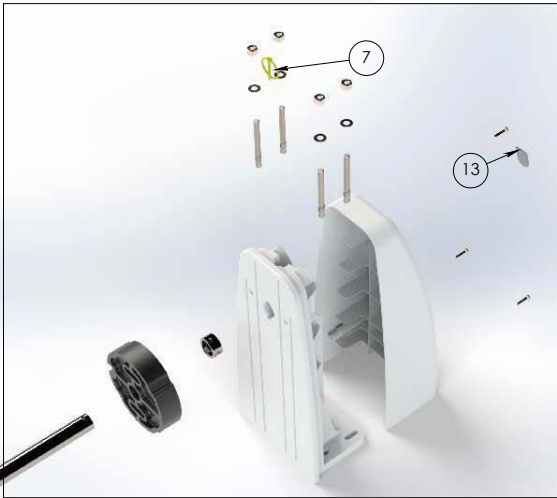
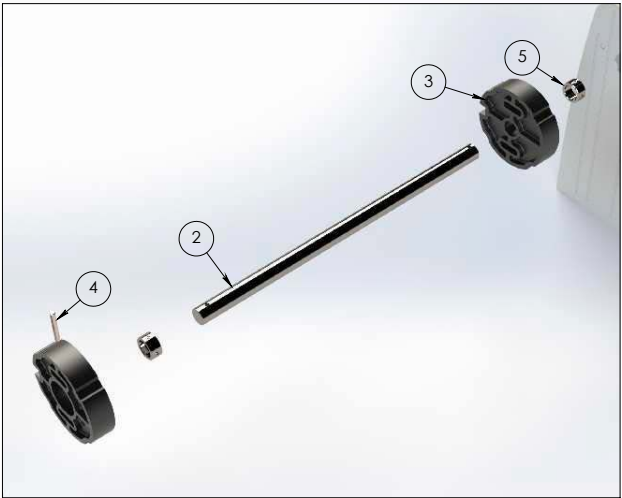
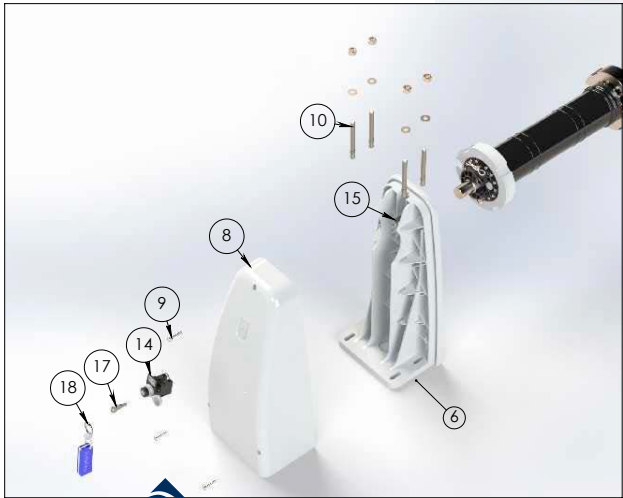
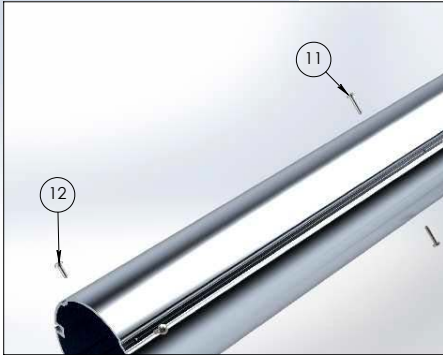


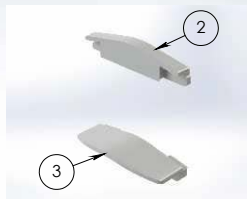
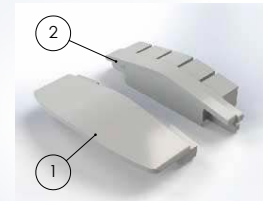
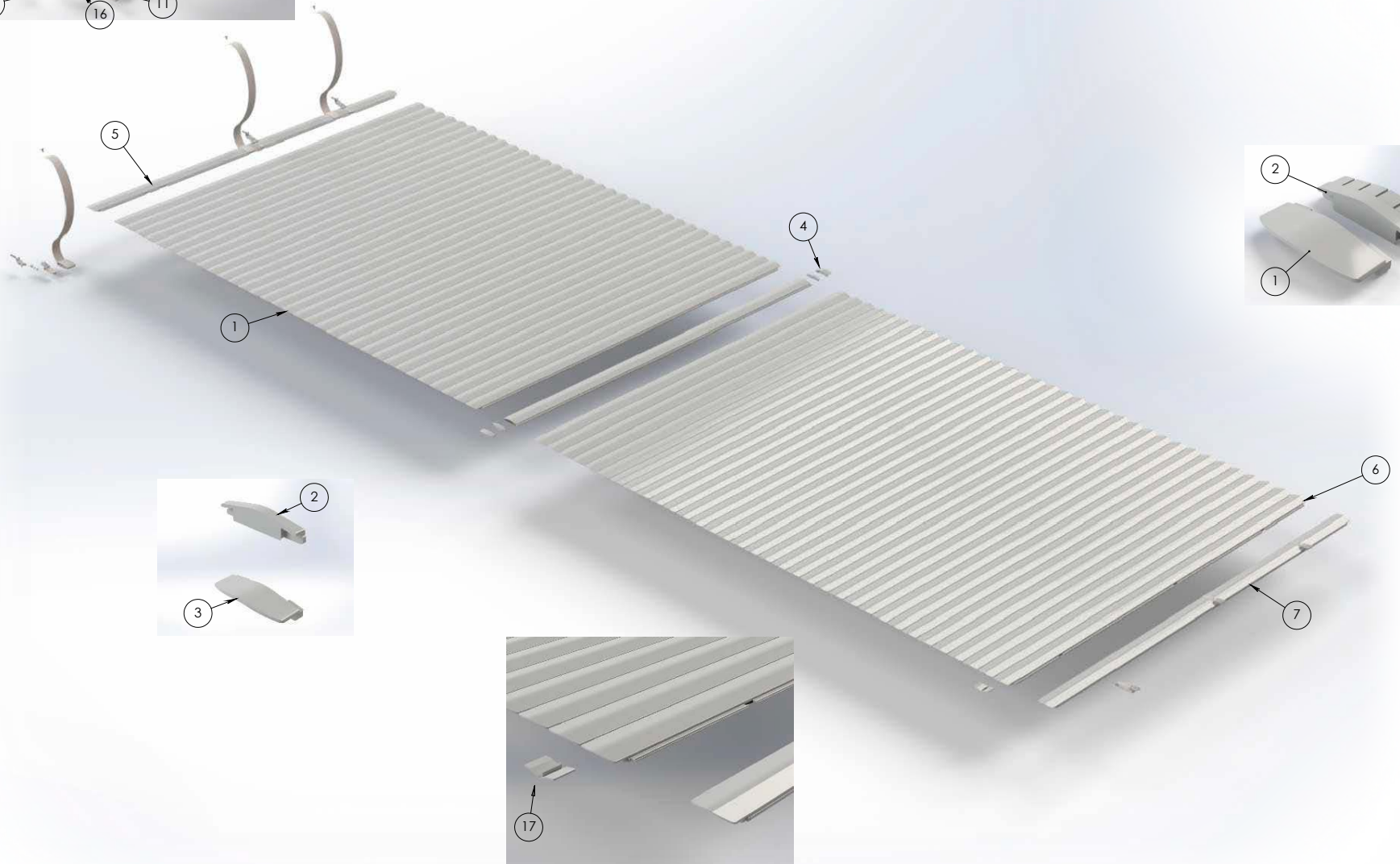
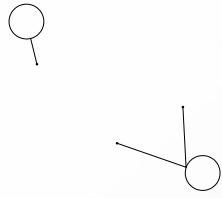
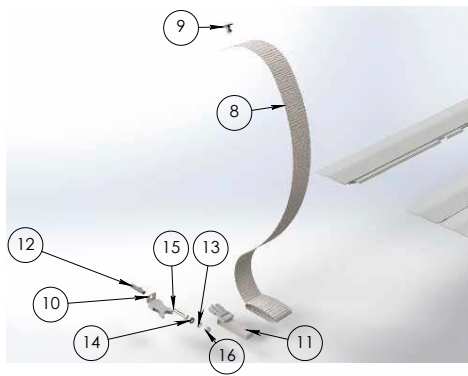
(O) : Open(Blue)
 (F) : Close(White)
 (C) : Common(Black)

- Process of setting switch limit:**
1. Cover in closed position: Press the initialization button for at least 3 seconds.
 2. Put on the blanket open position
 3. Release the key :

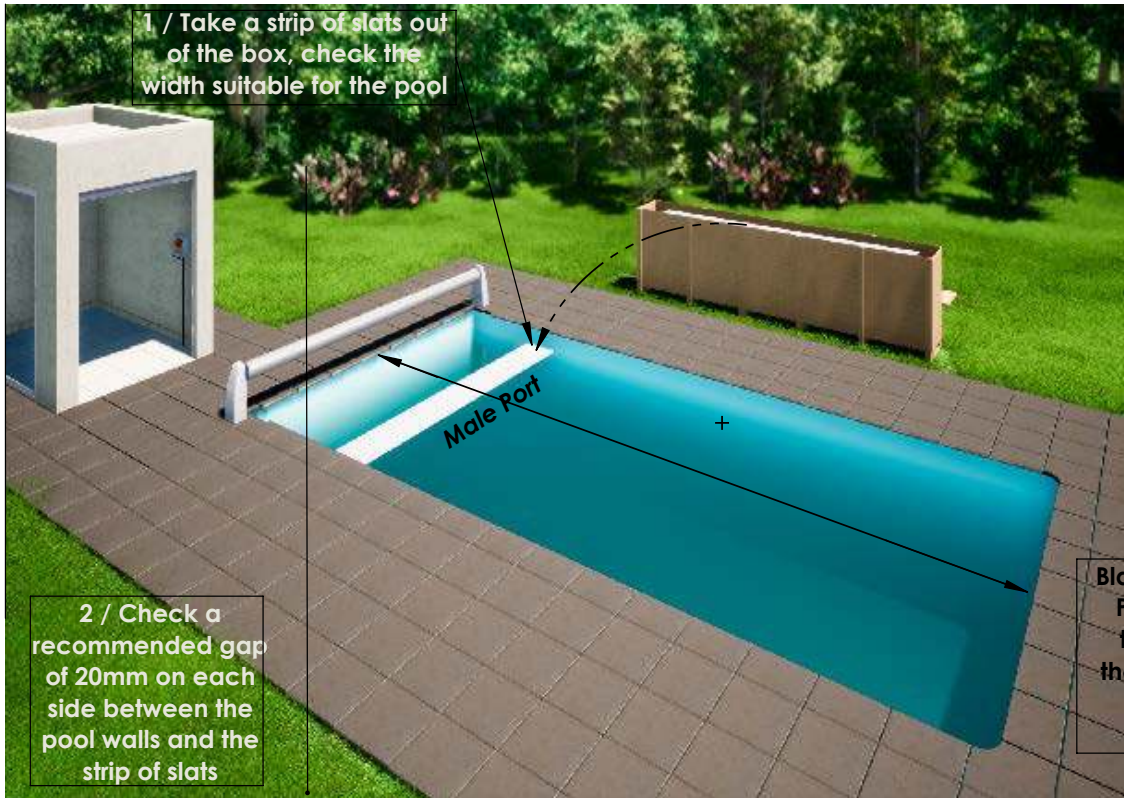
Cable work of Above Ground type Marquise Automatic Pool Cover







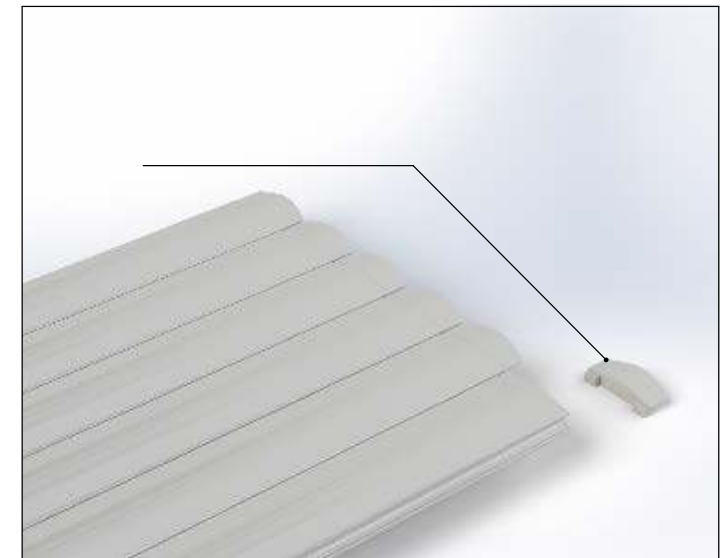
PLACING THE BLADES

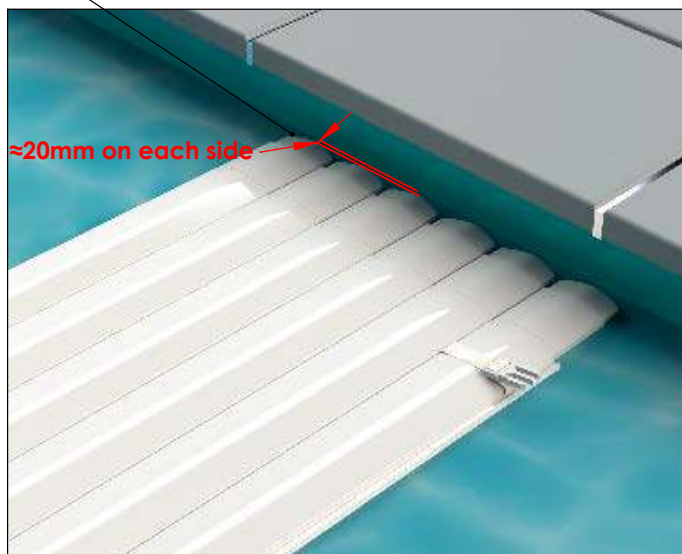
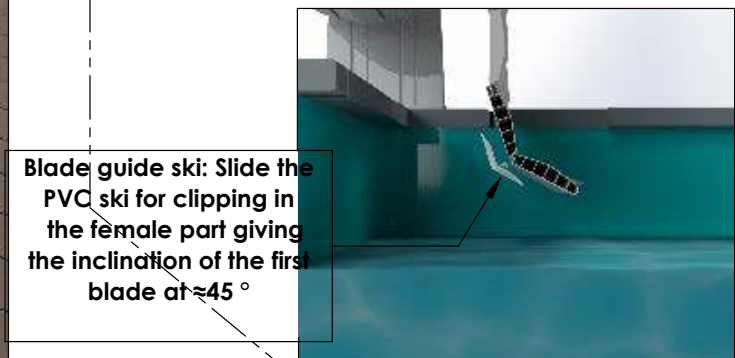
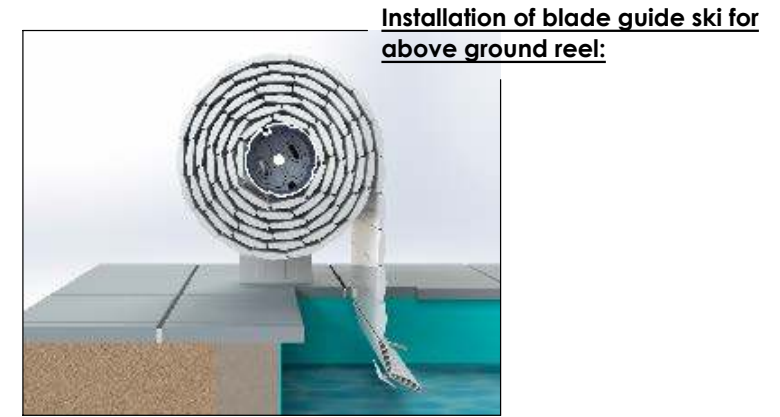
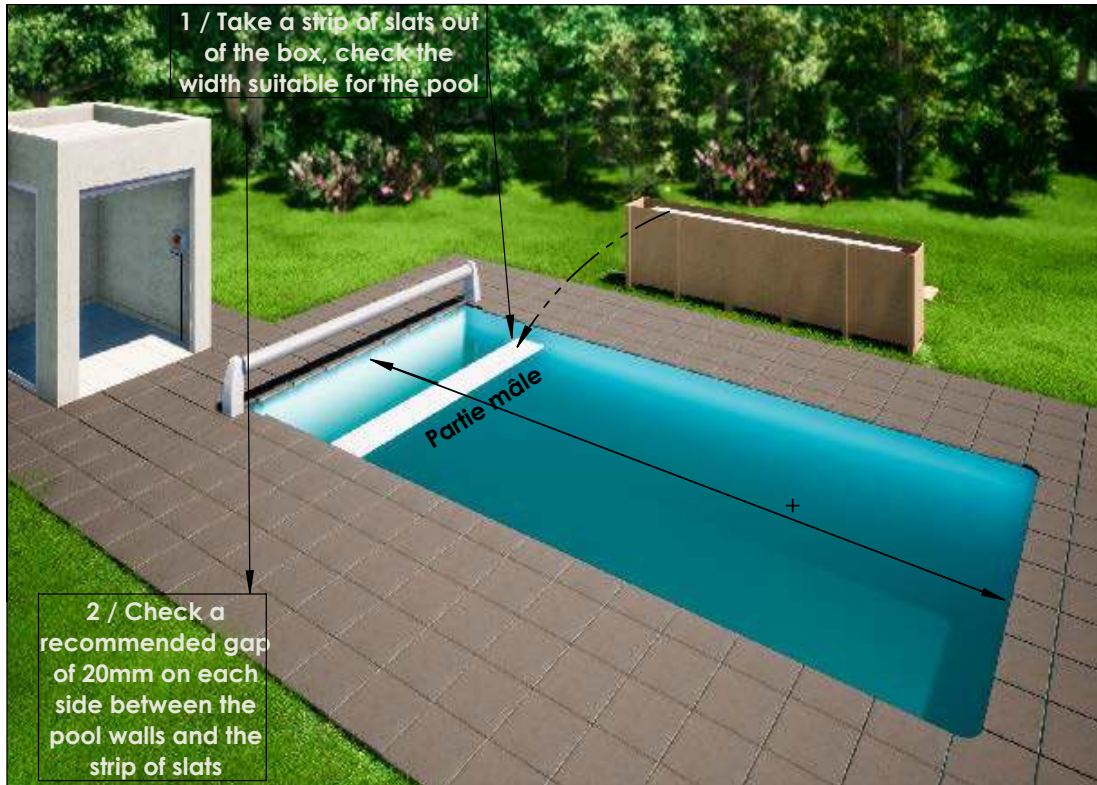


Installation of blade guide ski for above ground reel:

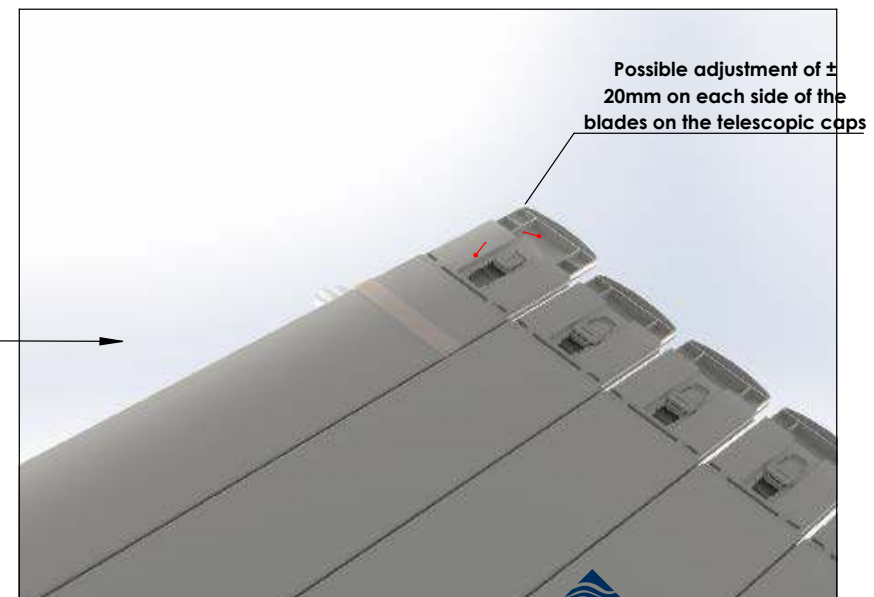


Blade guide ski: Slide the PVC ski for clipping in the female part giving the inclination of the first blade at $\approx 45^\circ$

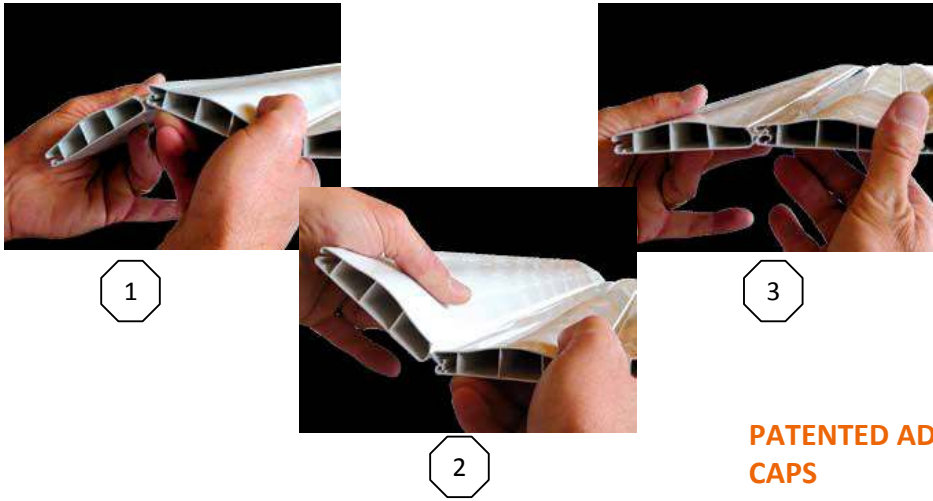




If deviation not respected



INSTALLATION OF COVER



- > Assembly of the cover to be carried out on the water swimming pool.
- > Reproduce an oscillating movement until the blades click into place.
- > Distribute the lateral play of the cover evenly over the pool.
- > Any cutout of the cap removes its guarantee of tightness and rigidity.



FIXED CAPS



PATENTED ADJUSTABLE CAPS



**Reinforced blade:
5 independent cells**

COLOR OPTIONS :

